

PRELIMINARY
CONCEPT PLAN

APPLE GROVE SOLAR
PREPARED FOR
SOLUNESCO
LOUISA COUNTY
VIRGINIA

KHA PROJECT
116662007
DATE
09/21/2020
SCALE AS SHOWN
DESIGNED BY BAH
DRAWN BY BAH
CHECKED BY SMM

NOT FOR
CONSTRUCTION

© 2020 KIMLEY-HORN AND ASSOCIATES, INC.
11400 COMMERCE PARK DR., SUITE 400
RESTON, VA 20191
PHONE: 703-674-1300
WWW.KIMLEY-HORN.COM

1818 LIBRARY STREET, SUITE 500
RESTON, VA 20190
PHONE: 703-672-5097
FAX: 703-574-4084
WWW.SOLUNESCO.COM

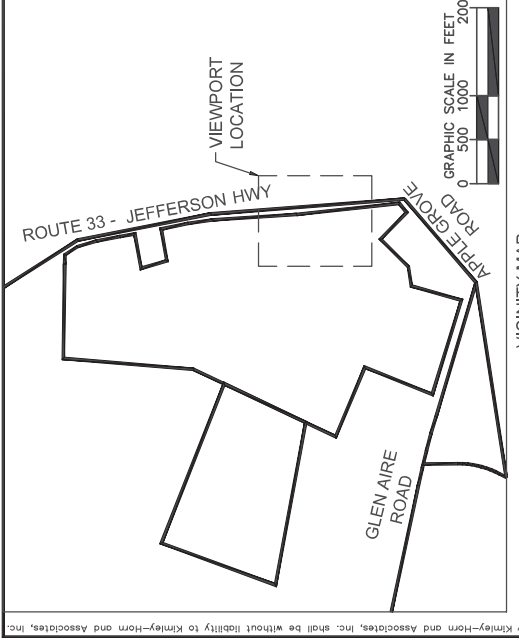
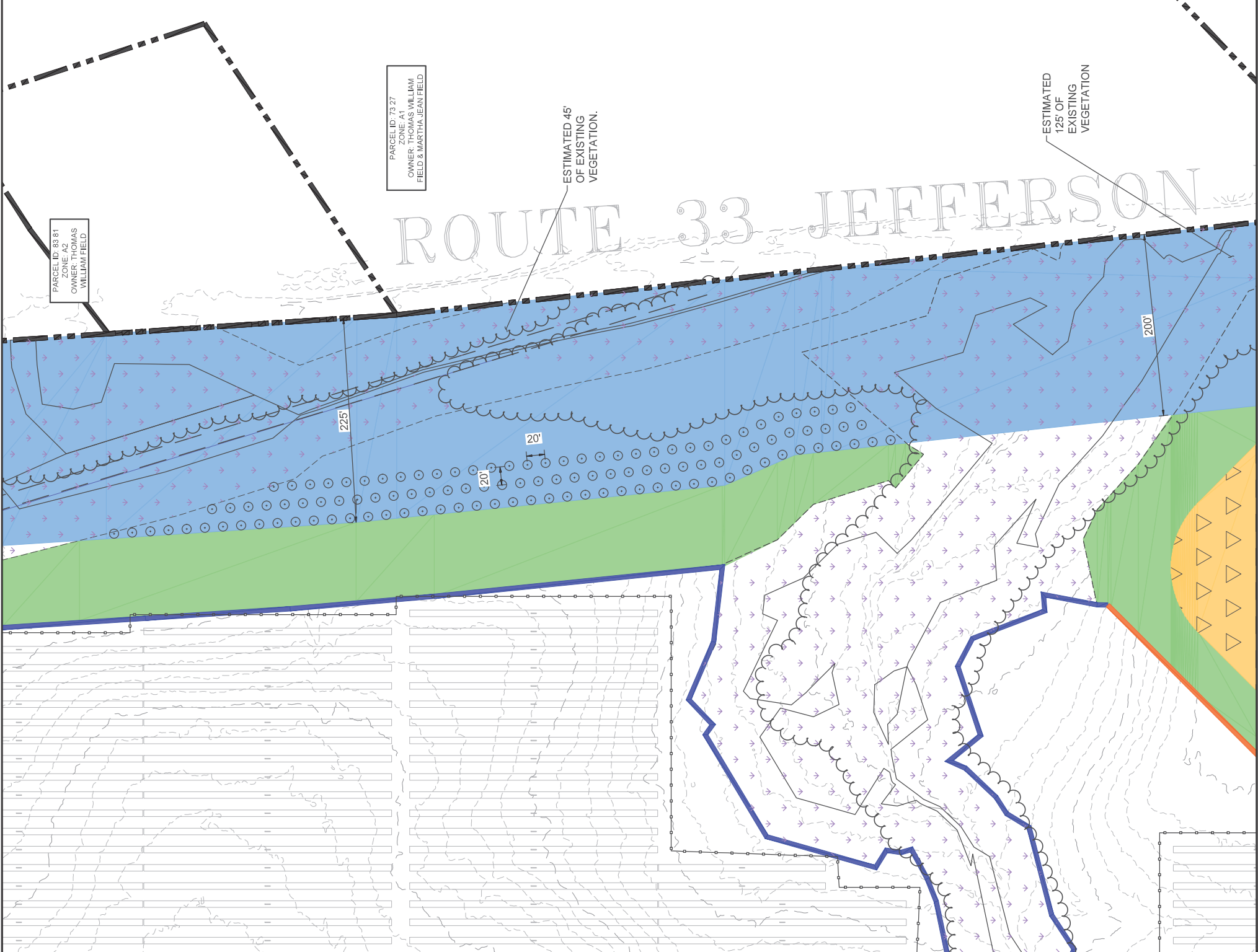
DATE	REVISION

LEGEND:

- PROPERTY LINE
- UTILITY EASEMENT
- SETBACK LINE, MINIMUM 50' OR GREATER WHERE SHOWN
- SETBACK LINE, MINIMUM 150' OR GREATER WHERE SHOWN
- SETBACK LINE, MINIMUM 300' OR GREATER WHERE SHOWN
- CONTOUR LINES AT 2' INCREMENTS
- CHAIN LINK FENCE
- TREE LINE OF EXISTING, MATURE VEGETATION PER AERIAL SURVEY AND CONFIRMED BY FIELD OBSERVATION
- PRELIMINARY 15MM SOLAR PANEL LAYOUT, TO BE FINALIZED AT TIME OF FINAL SITE PLAN. SHOWN USING 20' SPACING SCHEME
- DEVELOPMENT ENVELOPE (AREA TO BE PERMITTED FOR SOLAR EQUIPMENT)
- MINIMUM 100' BUFFER AREA WITHIN MINIMUM 150' SETBACK. PROJECT TO MAINTAIN ALL NATURAL REGROWTH FOR THE LIFE OF THE PROJECT, PLUS SUPPLEMENTAL PLANTINGS AS NOTED
- MINIMUM 200' BUFFER AREA WITHIN MINIMUM 300' SETBACK. PROJECT TO MAINTAIN ALL NATURAL REGROWTH FOR THE LIFE OF THE PROJECT, PLUS SUPPLEMENTAL PLANTINGS AS NOTED
- ADDITIONAL SETBACK AREA TO BE VEGETATED WITH CURRENT VEGETATION, PLANTED NATIVE GRASSES, OR POLLINATOR HABITAT. MAY CONTAIN GRAVEL ACCESS ROADS AND FENCING
- DELINEATED WETLANDS WITH 50' SETBACK. NO VEGETATION WILL BE REMOVED FROM WETLANDS FOR THE LIFE OF THE PROJECT
- VEGETATED BUFFER AREA TO BE SUPPLEMENTED WITH 400 GREEN GIANT ARBORVITAE OR APPROVED EQUAL PER ACRE
- 5' TALL GREEN GIANT ARBORVITAE OR APPROVED EQUAL

GRAPHIC SCALE IN FEET
0 30 60 120

NORTH



This document, together with the concepts and designs presented herein, is intended only for the specific purpose and client for which it was prepared. Reuse or and improper reliance on this document without written authorization and adoption by Kimley-Horn and Associates, Inc. shall be without liability to Kimley-Horn and Associates, Inc.

DATE	REVISION

SolunESCO
 1818 LIBRARY STREET, SUITE 500
 RESTON, VA 20190
 PHONE: 703-672-5097
 FAX: 703-574-4084
 WWW.SOLUNESCO.COM

Kimley-Horn
 © 2020 KIMLEY-HORN AND ASSOCIATES, INC.
 11400 COMMERCE PARK DR., SUITE 400
 RESTON, VA 20191
 PHONE: 703-674-1300
 WWW.KIMLEY-HORN.COM

NOT FOR
 CONSTRUCTION

KHA PROJECT
 116662007
 DATE
 09/21/2020
 SCALE AS SHOWN
 DESIGNED BY BAH
 DRAWN BY BAH
 CHECKED BY SMM

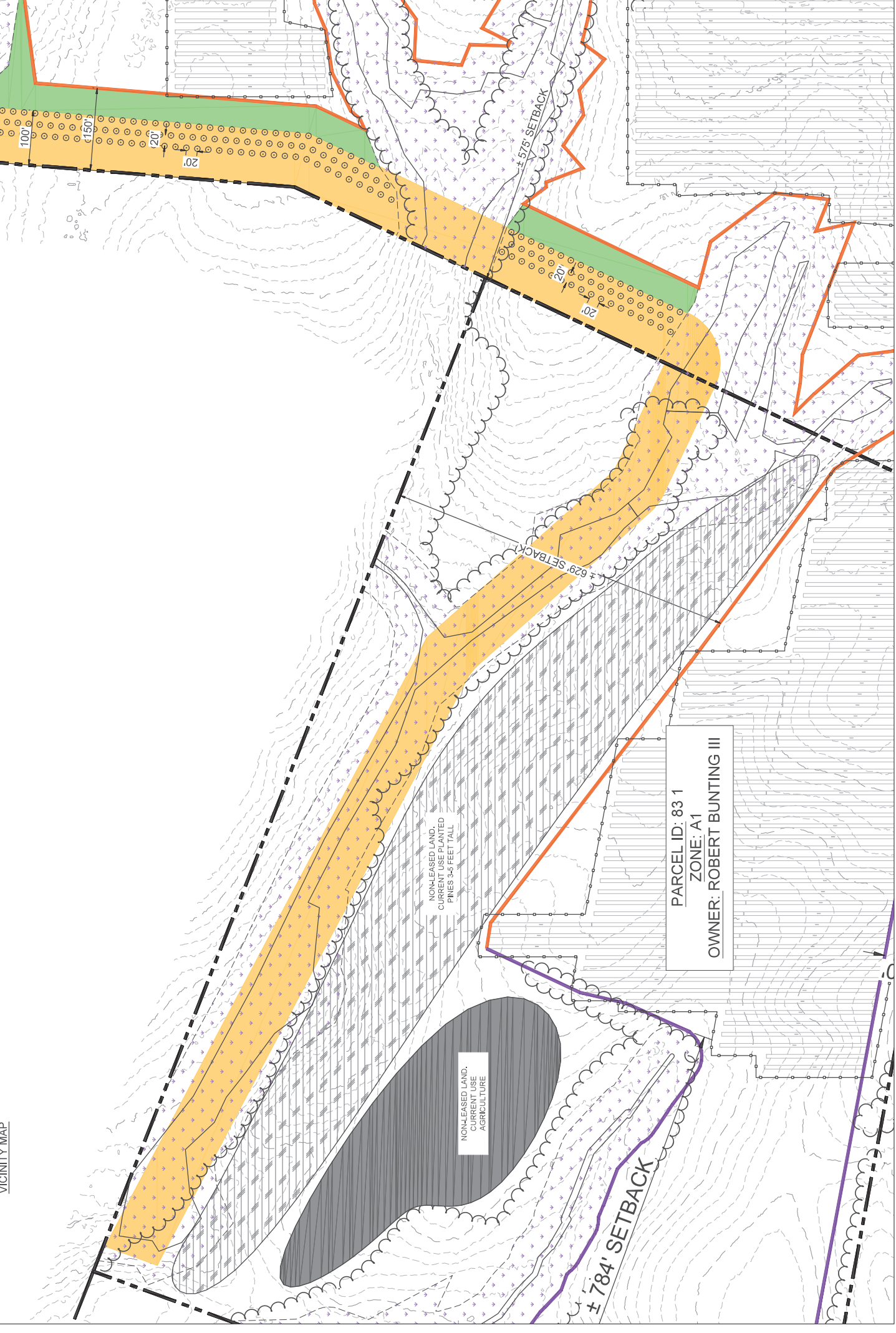
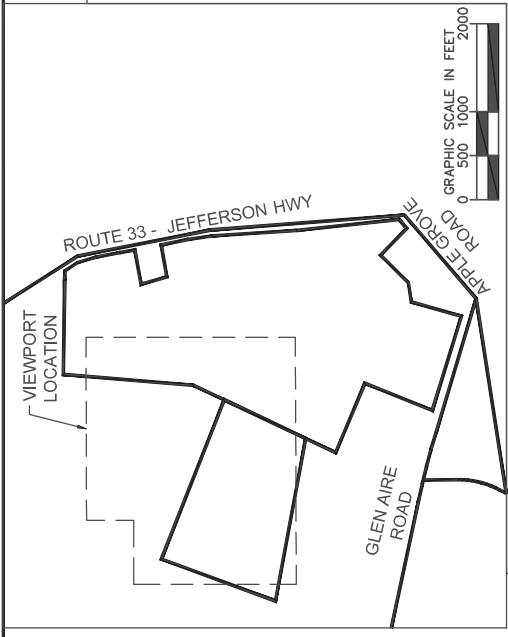
APPLE GROVE SOLAR
 PREPARED FOR
 SOLUNESCO
 LOUISA COUNTY
 VIRGINIA

PRELIMINARY
 CONCEPT PLAN

SHEET NUMBER
 EX-4



- LEGEND:**
- PROPERTY LINE
 - SETBACK LINE, MINIMUM 50' OR GREATER WHERE SHOWN
 - SETBACK LINE, MINIMUM 150' OR GREATER WHERE SHOWN
 - CHAIN LINK FENCE
 - CONTOUR LINES AT 2' INCREMENTS
 - TREE LINE OF EXISTING, MATURE VEGETATION PER AERIAL SURVEY AND CONFIRMED BY FIELD OBSERVATION
 - PRELIMINARY 15MM SOLAR PANEL LAYOUT, TO BE FINALIZED AT TIME OF FINAL SITE PLAN, SHOWN USING 20' SPACING SCHEME
 - DEVELOPMENT ENVELOPE (AREA TO BE PERMITTED FOR SOLAR EQUIPMENT)
 - MINIMUM 100' BUFFER AREA WITHIN MINIMUM 150' SETBACK, PROJECT TO MAINTAIN ALL NATURAL REGROWTH FOR THE LIFE OF THE PROJECT, PLUS SUPPLEMENTAL PLANTINGS AS NOTED
 - ADDITIONAL SETBACK AREA TO BE VEGETATED WITH CURRENT VEGETATION, PLANTED NATIVE GRASSES, OR POLLINATOR HABITAT, MAY CONTAIN GRAVEL ACCESS ROADS AND FENCING
 - DELINEATED WETLANDS WITH 50' SETBACK. NO VEGETATION WILL BE REMOVED FROM WETLANDS FOR THE LIFE OF THE PROJECT
 - 5' TALL GREEN GIANT ARBORVITAE OR APPROVED EQUAL



PARCEL ID: 83 1
 ZONE: A1
 OWNER: ROBERT BUNTING III

NON-LEASED LAND,
 CURRENT USE PLANTED
 PINES 3-5 FEET TALL

NON-LEASED LAND,
 CURRENT USE
 AGRICULTURE

This document, together with the concepts and designs presented herein, is intended only for the specific purpose and client for which it was prepared. Reuse or and improper reliance on this document without written authorization and adoption by Kimley-Horn and Associates, Inc. shall be without liability to Kimley-Horn and Associates, Inc.

PRELIMINARY
CONCEPT PLAN

APPLE GROVE SOLAR
PREPARED FOR
SOLUNESCO
LOUISA COUNTY
VIRGINIA

KHA PROJECT
116662007
DATE
09/21/2020
SCALE AS SHOWN
DESIGNED BY BAH
DRAWN BY BAH
CHECKED BY SMM

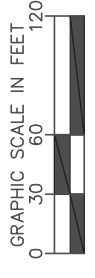
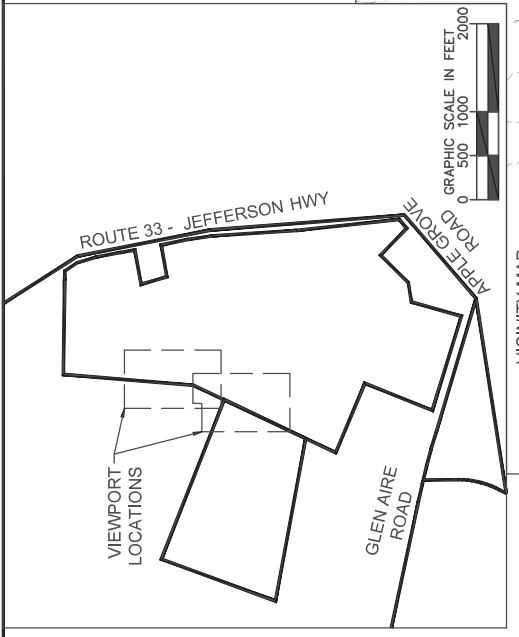
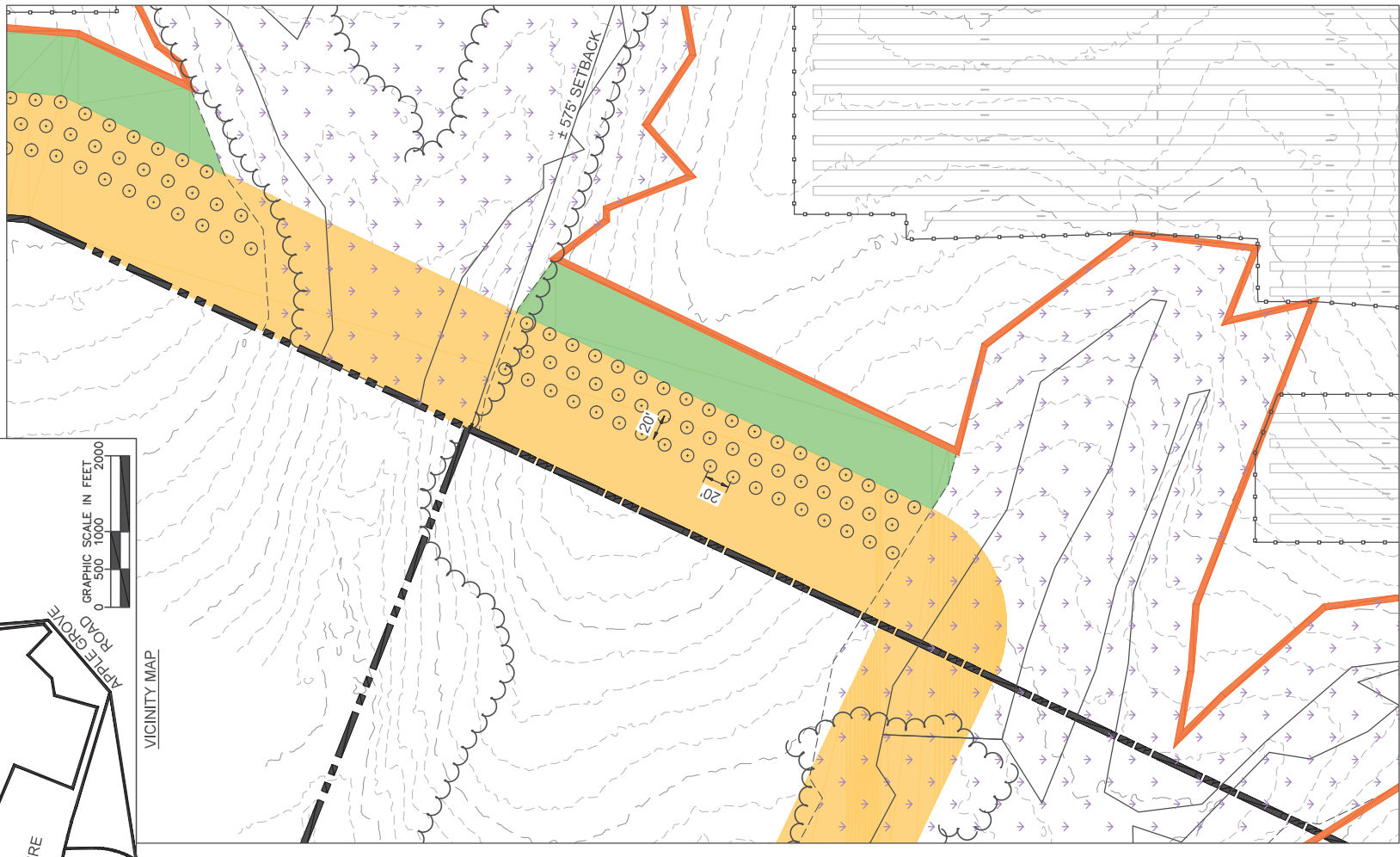
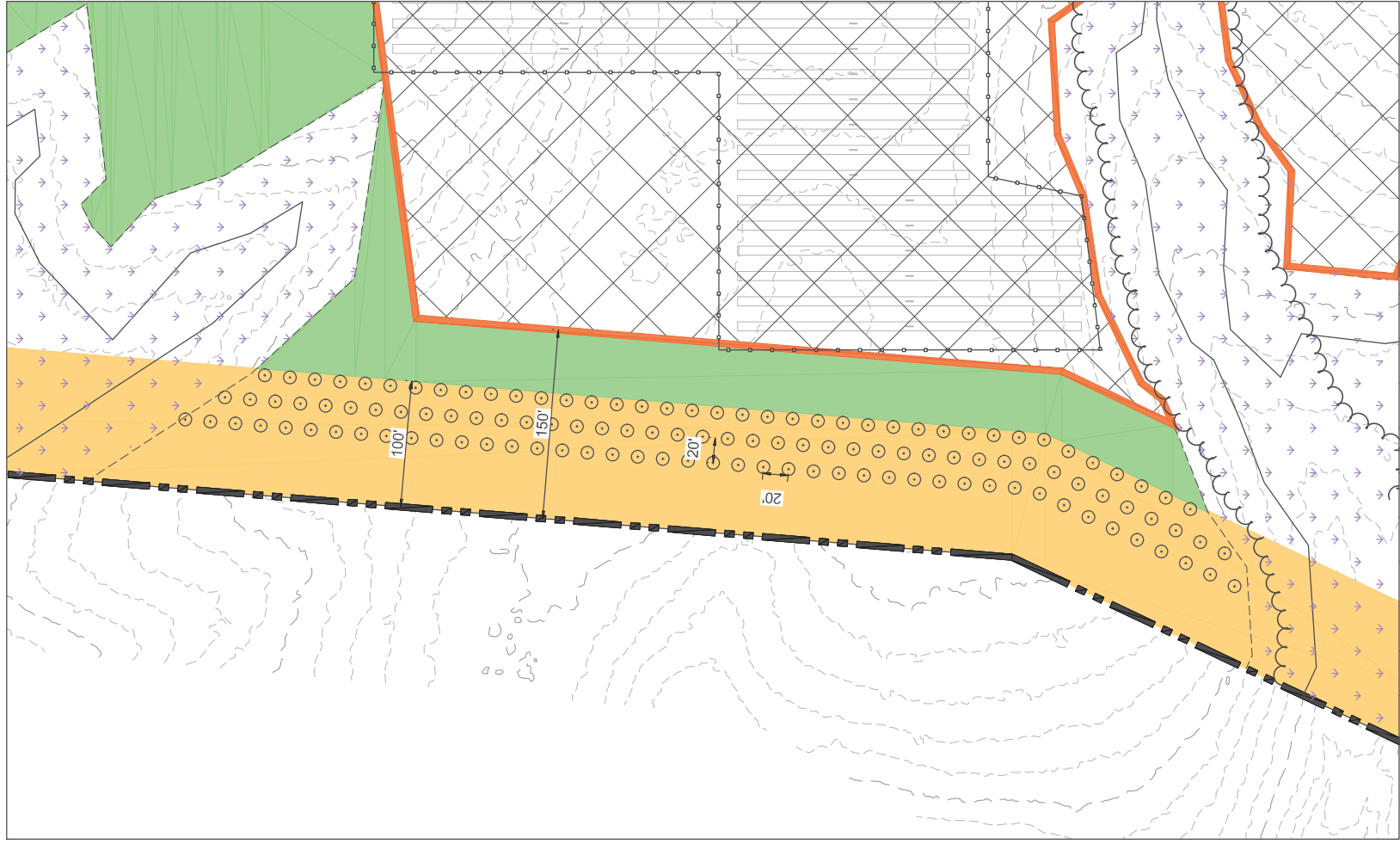
NOT FOR
CONSTRUCTION

© 2020 KIMLEY-HORN AND ASSOCIATES, INC.
11400 COMMERCE PARK DR., SUITE 400
RESTON, VA 20191
PHONE: 703-674-1300
WWW.KIMLEY-HORN.COM

1818 LIBRARY STREET, SUITE 500
RESTON, VA 20190
PHONE: 703-672-5097
FAX: 703-574-4084
WWW.SOLUNESCO.COM



DATE	REVISION



- LEGEND:**
- PROPERTY LINE
 - SETBACK LINE, MINIMUM 50' OR GREATER WHERE SHOWN
 - SETBACK LINE, MINIMUM 150' OR GREATER WHERE SHOWN
 - CONTOUR LINES AT 2' INCREMENTS
 - CHAIN LINK FENCE
 - TREE LINE OF EXISTING, MATURE VEGETATION - PER AERIAL SURVEY AND CONFIRMED BY FIELD OBSERVATION
 - PRELIMINARY 15MW SOLAR PANEL LAYOUT, TO BE FINALIZED AT TIME OF FINAL SITE PLAN, SHOWN USING 20' SPACING SCHEME
 - DEVELOPMENT ENVELOPE (AREA TO BE PERMITTED FOR SOLAR EQUIPMENT)
 - MINIMUM 100' BUFFER AREA WITHIN MINIMUM 150' SETBACK - PROJECT TO MAINTAIN ALL NATURAL REGROWTH FOR THE LIFE OF THE PROJECT, PLUS SUPPLEMENTAL PLANTINGS AS NOTED
 - ADDITIONAL SETBACK AREA TO BE VEGETATED WITH CURRENT VEGETATION, PLANTED NATIVE GRASSES, OR POLLINATOR HABITAT, MAY CONTAIN GRAVEL ACCESS ROADS AND FENCING
 - DELINEATED WETLANDS WITH 50' SETBACK, NO VEGETATION WILL BE REMOVED FROM WETLANDS FOR THE LIFE OF THE PROJECT
 - 5' TALL GREEN GIANT ARBORVITAE OR APPROVED EQUAL

This document, together with the concepts and designs presented herein, is intended only for the specific purpose and client for which it was prepared. Reuse or and improper reliance on this document without written authorization and adoption by Kimley-Horn and Associates, Inc. shall be without liability to Kimley-Horn and Associates, Inc.